

# Install Guide to connect KX-P8410/KX-PS8000 with Netware ver5.0 server.

## Introduction

This guide is written for describing the procedure to connect KX-P8410/KX-PS8000 with Netware ver5.0 server and supplementing Quick Install Guide of KX-PNBC4.(Ethernet card of KX-P8410/KX-PS8000). Please read this install guide in advance as it explains the basic settings related to Netware.

## The procedure.

The procedure consists of the following two major steps.

### (1)Installing the Ethernet Card.

Install the Ethernet card (KX-PNBC4) by following the procedure described in Quick Install Guide.

After installing the Ethernet card, you need to change the setting of the card if you want to use RPrinter/Nprinter or select Nprinter port in NDPS mode. You also need to change the setting if the frame type is different between the card and the server when IPX/SPX is used as a network protocol.

To change the setting of the card, you need to install the Network Print Manager. Please refer to “Using the Netware Server” in Quick Installation Guide.

### (2)Setting up Server and Client.

Netware ver5.0 has the following features.

(a) Netware ver5.0 has two ways to manage Network resources such as server PC, Printer or User account.

NDS (Novell Directory Services) or Bindery

(b) Netware ver5.0 has introduced the new system to manage the printer called NDPS in addition to the conventional way which needs Print Queue, Print Server, Printer settings.

(c) Netware ver5.0 can let you choose the network protocol, TCP/IP or IPX/SPX.

Please refer to Netware or Novell documentation for more detail.

Please decide the setting for each item in advance of the setup as the procedure depends on the settings.

### (1)NDS management

(1.1) If you are using IPX/SPX protocol,

(1.1.1) PServer mode.

(1.1.2) NPrinter mode.

(1.1.3) NDPS with PServer mode.

(1.1.4) NDPS with NPrinter mode.

(1.2) If you are using TCP/IP protocol,

(1.2.1) NDPS with lpr.

(2) Bindery management

(2.1) Pserver mode. Please refer to the CD-ROM documentation that comes with KX-PNBC4.

(2.2) RPrinter mode. Please refer to the CD-ROM documentation that comes with KX-PNBC4.

(1.1.1) Use Netware ver5.0 with Pserver mode, IPX/SPX protocol, NDS.

After installing the Ethernet card, please follow the below two major setup procedures.

(1.1.1.1) Setting up the printer settings in Netware ver5.0 file Server.

(1.1.1.2) Setting up the Client Computer.

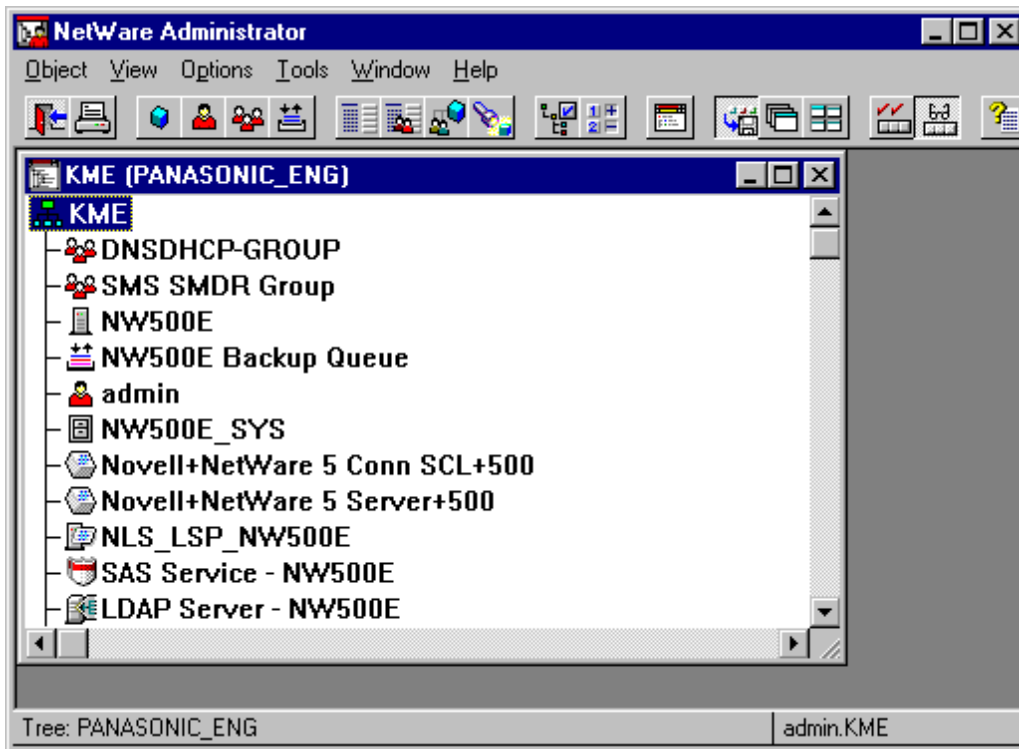
(1.1.1.1) Setting up the printer settings in Netware ver5.0 file Server.

Set up your Client PC in advance so that you can login the server in NDS mode as the printer settings is done mostly on the Client PC. Please refer to Netware online manual for more detail.

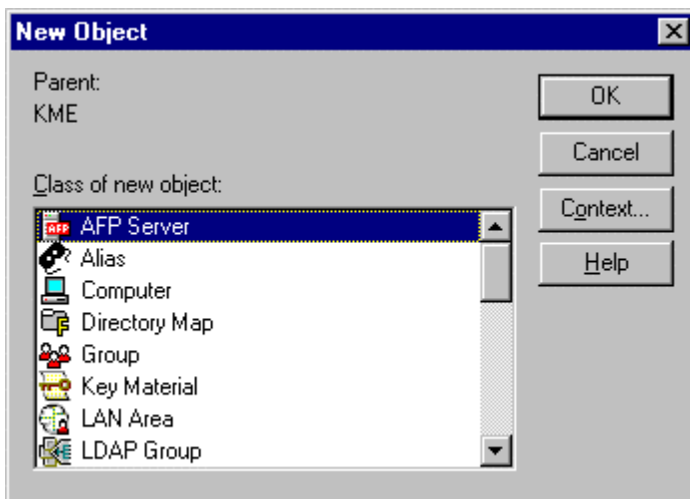
1. Start the Netware server.

2. Start your client PC (Windows95 or Windows98). Login to the server in NDS mode as the Supervisor(Admin).

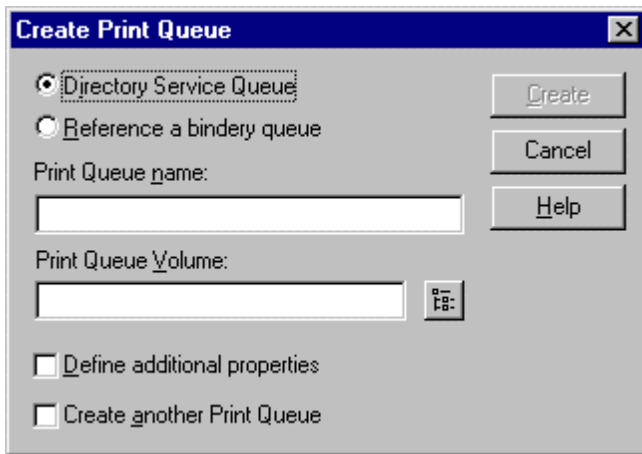
3. Launch Netware Administrator. You can do so by clicking on **NWADMIN** icon in the Netware Tools group in Windows.



4.Highlight the Context where you want to create the Queue object.. Select the **Object** from **Main** menu and Choose **Create**.

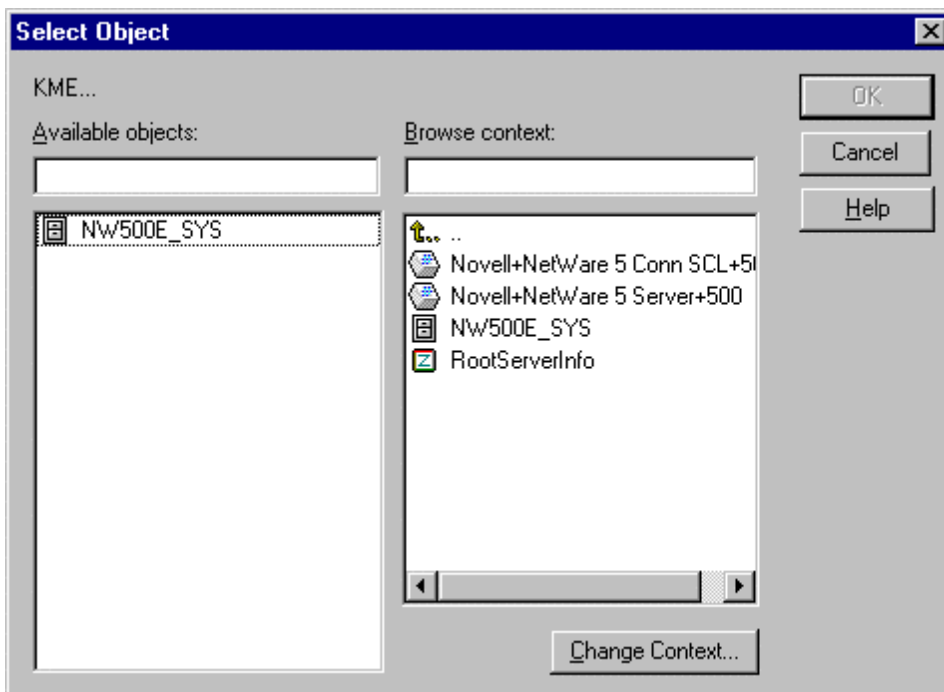


5.Select **Print Queue** when **New Object** windows appears and click **OK**.



6. Specify a Print Queue name in the **Printer Queue Name** box.  
It is recommended to specify the Printer model name.  
Ex.) P8410.

7. Click the button to the right of the **Print Queue Volume** box.

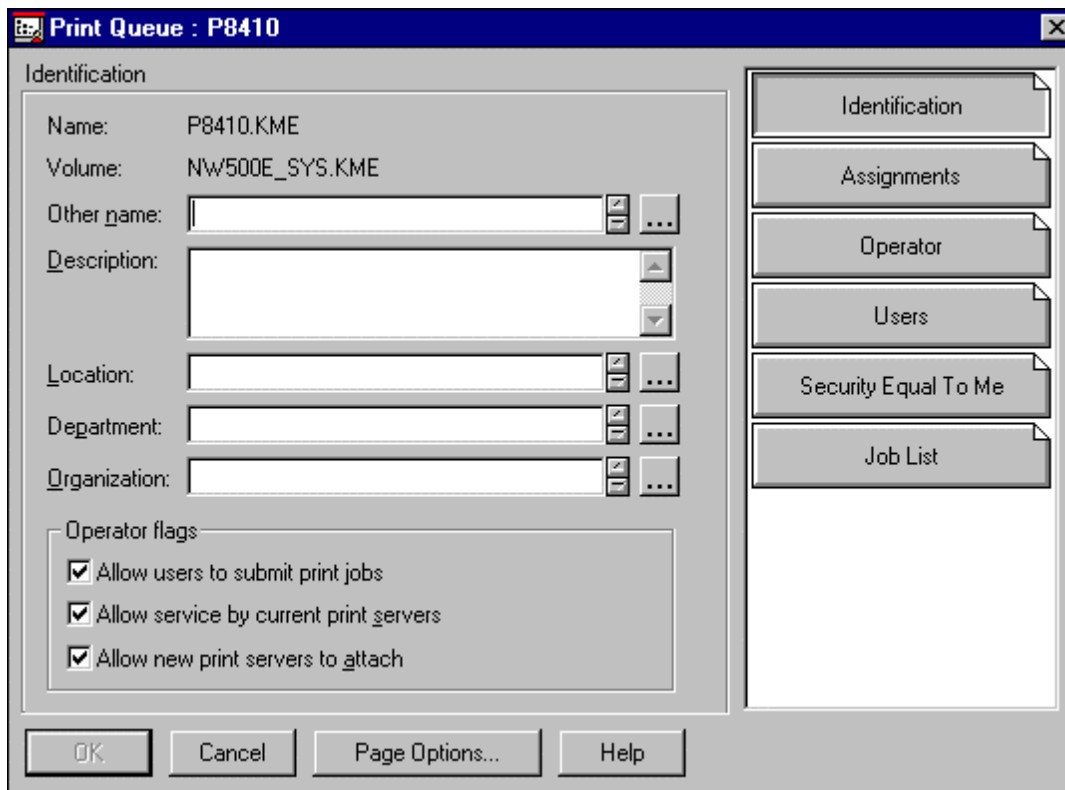


8. When the **Select Object** windows appears, scroll the Directory Context items until you find the context where you want the queue to reside.

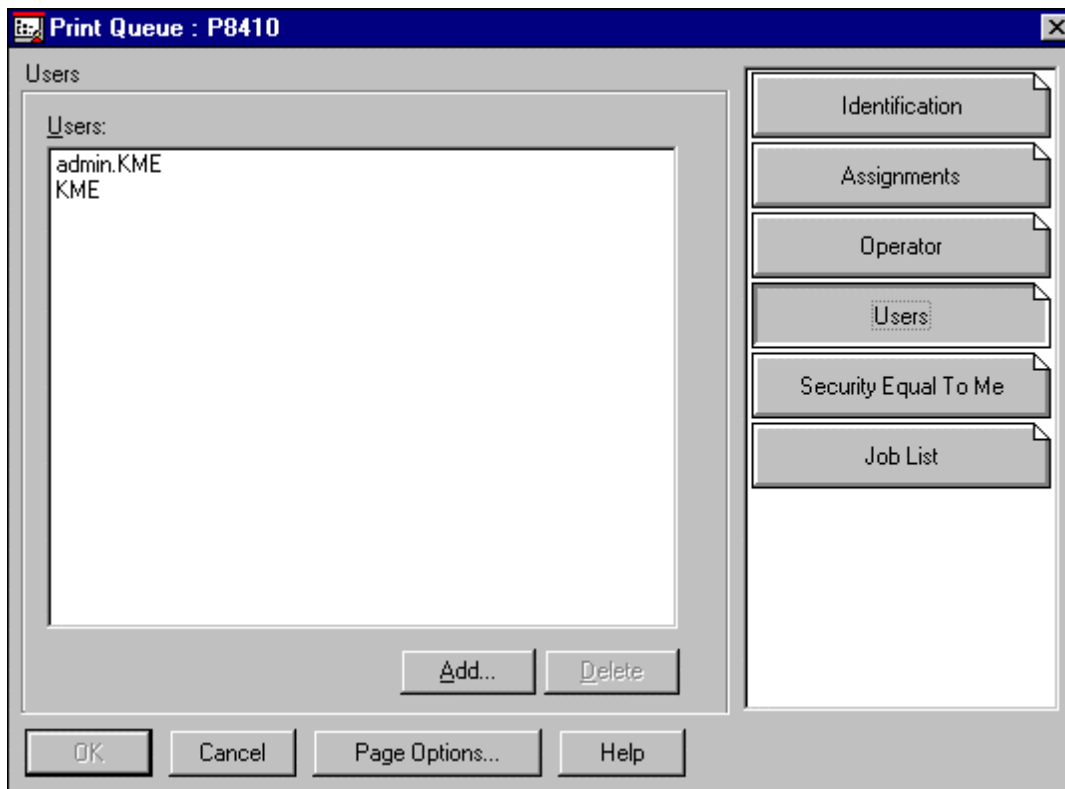
(You do not have to scroll if the queue is created on the current context.)

Click the value of your choice and then click **OK** button.

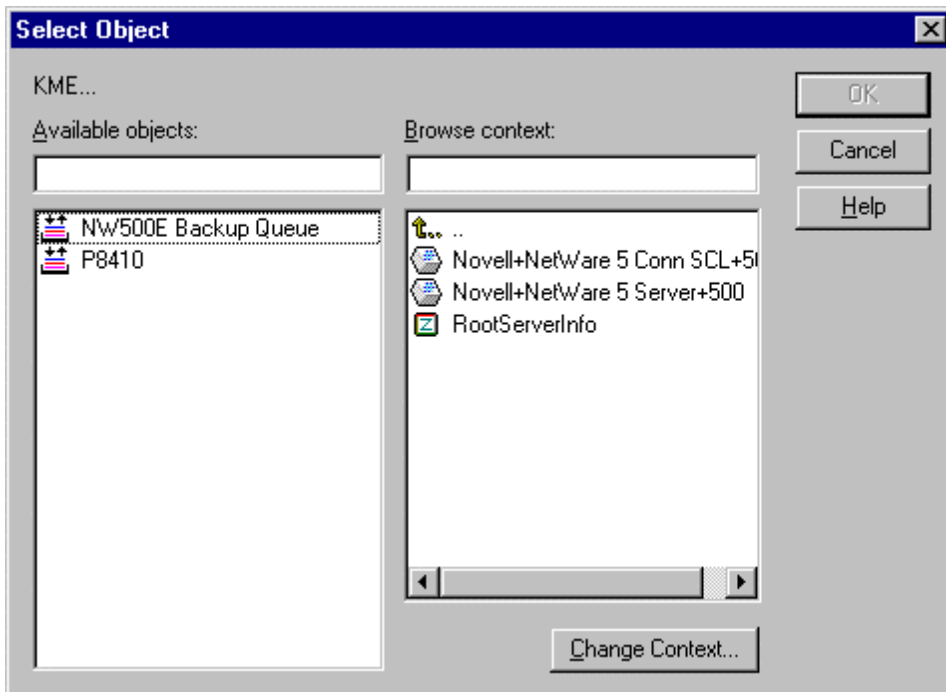
9. The **Create Print Queue** window appears again and this time shows the selected context. Click the check box labeled **“Define additional properties”** and click **Create** button.



10. Click **Users** button.



11. Click **Add...** button.



12. Scroll the Directory Context items until you find the context where you can find the user(s) to use the queue. (You do not have to scroll if you can find the user(s) on the current context.)

Select the user or the group who use the queue and click **OK** button.

The **Print Queue** windows appears again.

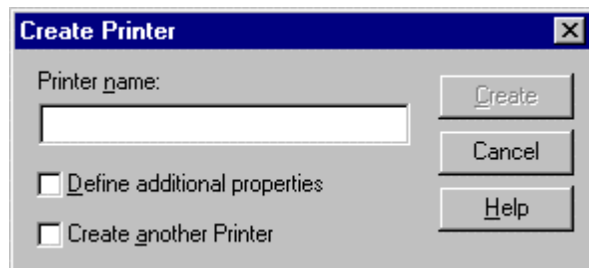
(The only registered users or groups can use the printer. Please register all the users or groups who will use the printer.)

13. Click **OK** button. (Click **Cancel** if you do not make any change.)

Netware administrator window appears again showing the created queue.

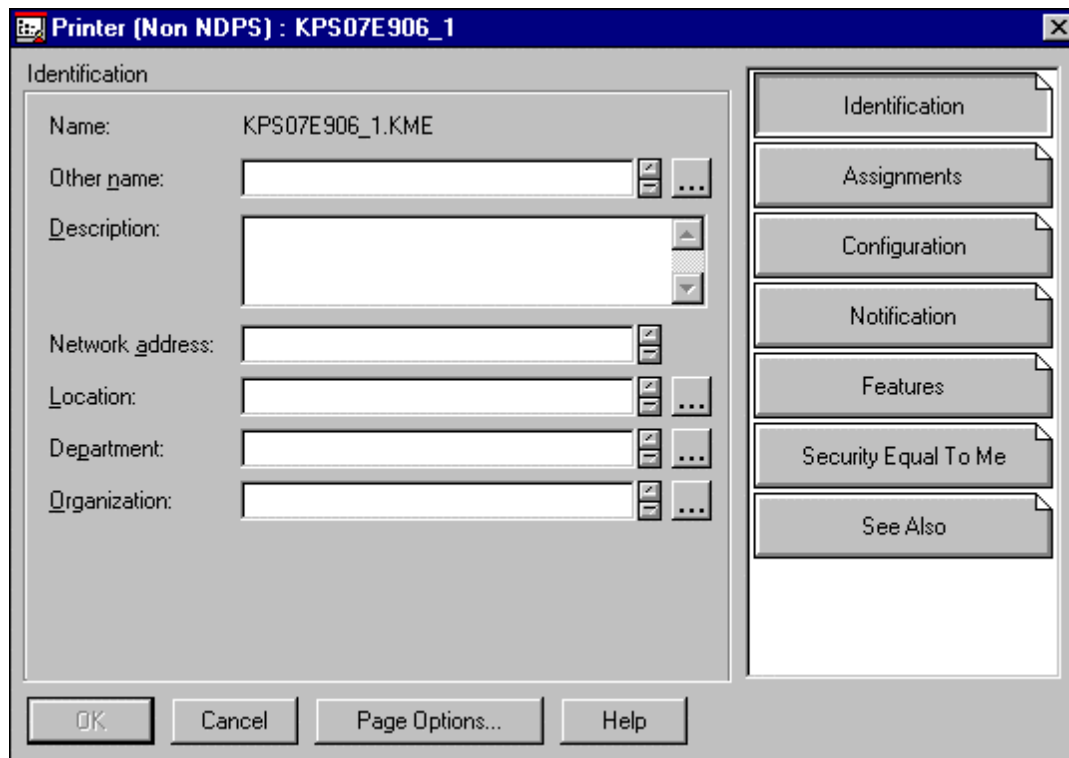
14. Highlight the Context where you want to create the Printer object.. Select the **Object** from **Main** menu and Choose **Create**.

15. Select **Printer (Non NDPS)** when **New Object** windows appears and click **OK**.

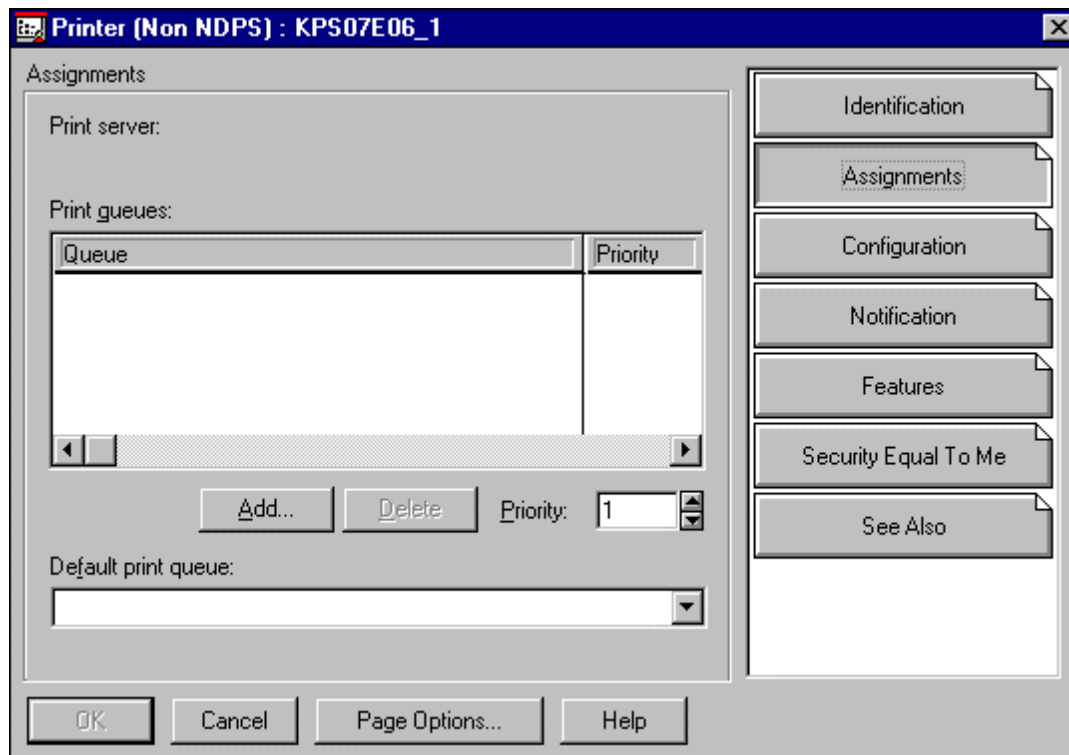


16. Enter the Printer name of the Ethernet card in **Printer name** box.

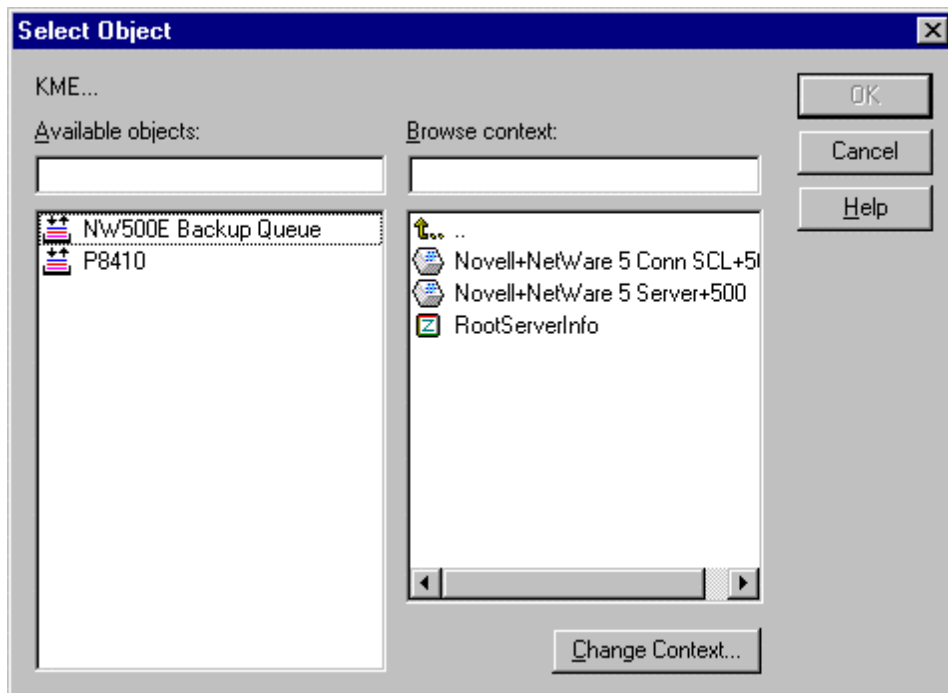
Click the check box labeled **“Define additional properties”** and click **Create** button.  
The Printer name of the Ethernet card is KPSXXXXXX\_1 ( XXXXXX is the lower 6 characters of the MAC address. ) You can see the MAC address at the face plate of the card.



17. Click **Assignments**.



18. Click **Add....**

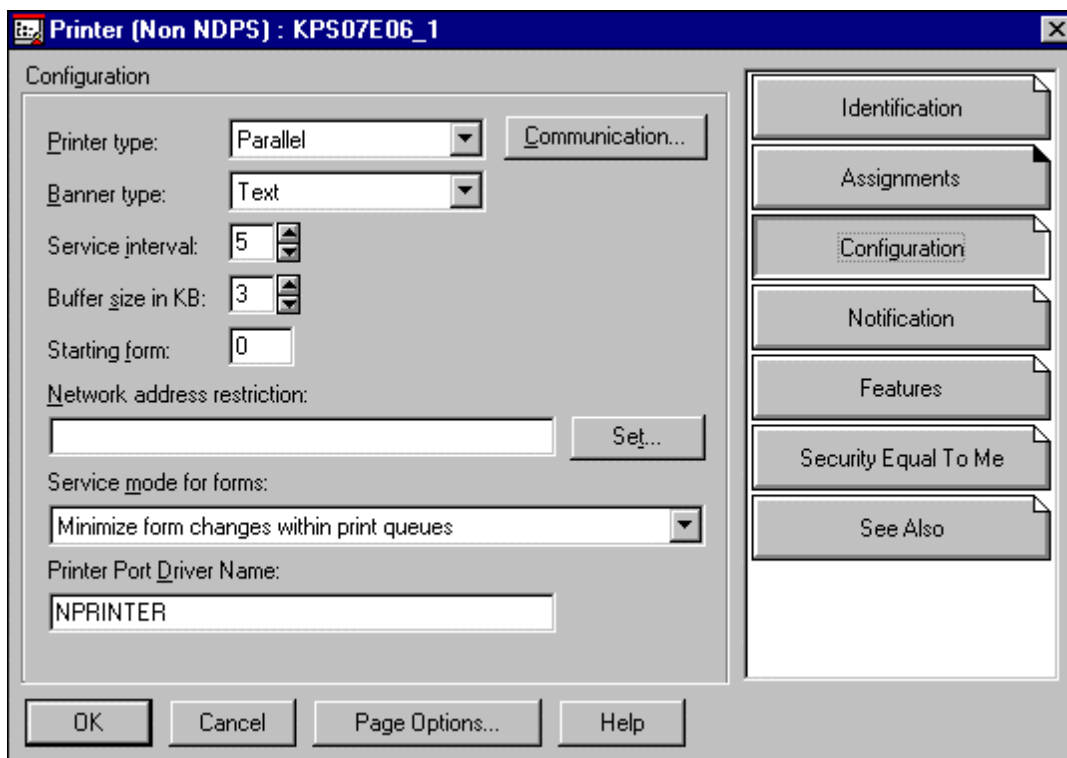


19. Scroll the Directory Context items until you find the context where you can find the queue created in the procedure 13. (You do not have to scroll if you can find the queue on the current context.)

Highlight the queue in the **Available objects** list box and click **OK** button.

The **Printer (non NDPS)** window appears again showing the selected queue.

20. Click **Configuration** button.

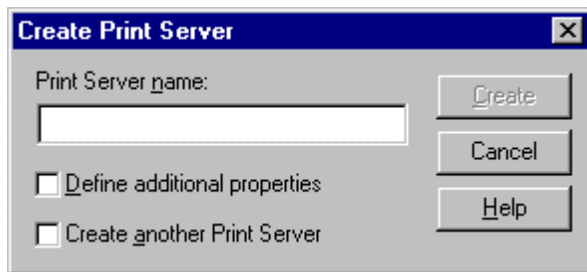


21. Select **Other/Unknown** as a **Printer type** setting and click **OK** button.

Netware administrator window appears again showing the created printer.

22. Highlight the Context where you want to create the Print Server object.. Select the **Object** from **Main** menu and Choose **Create**.

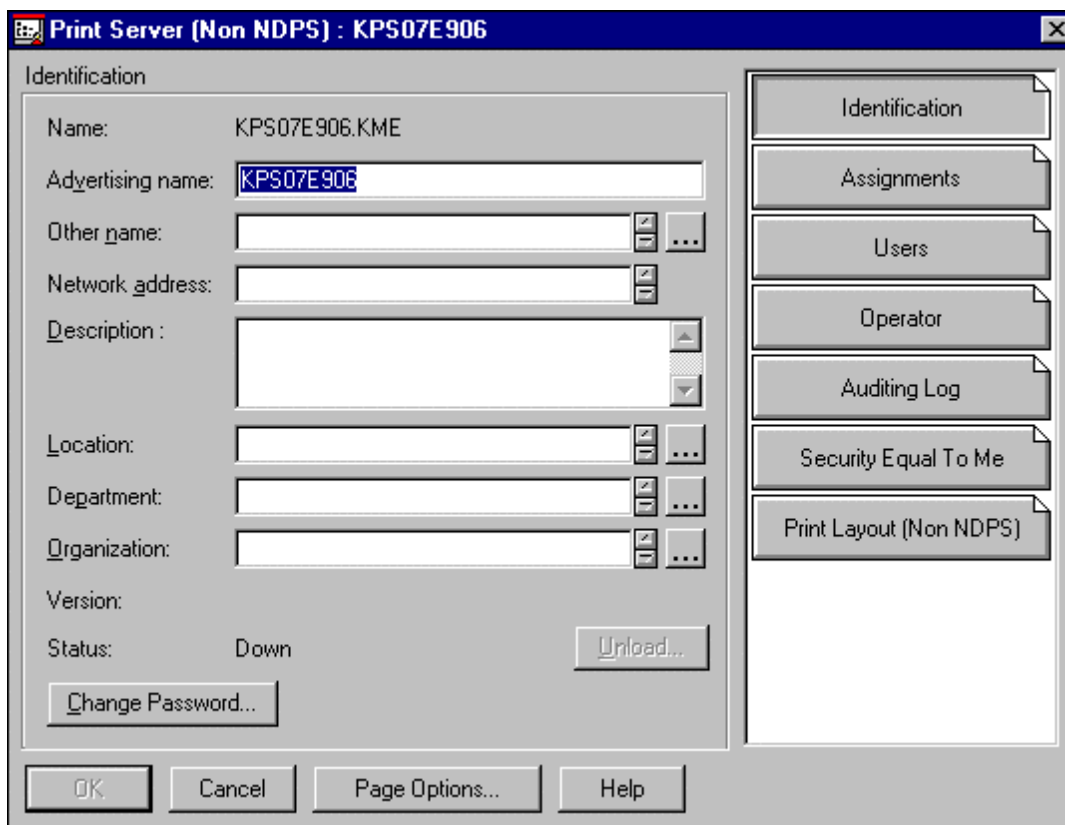
23. Select **Print Server (Non NDPS)** when **New Object** windows appears and click **OK**.



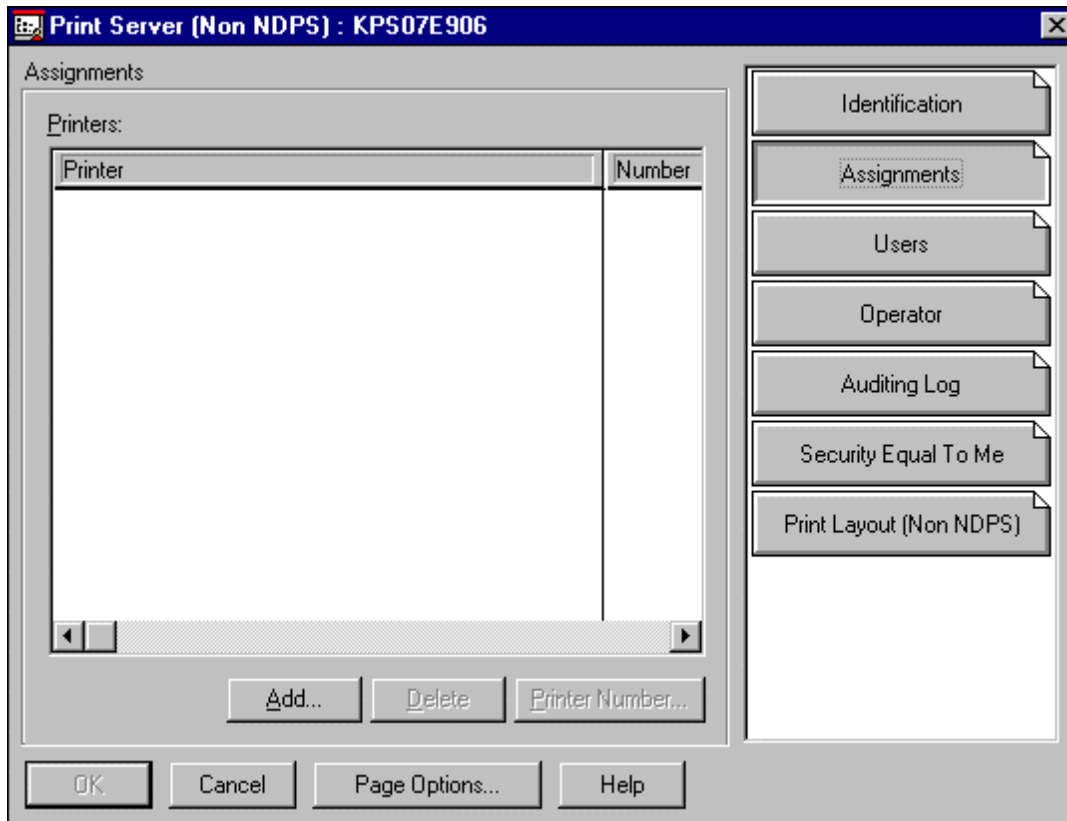
24. Enter the node name of the Ethernet card in **Print Server name** box.

Click the check box labeled “**Define additional properties**” and click **Create** button.

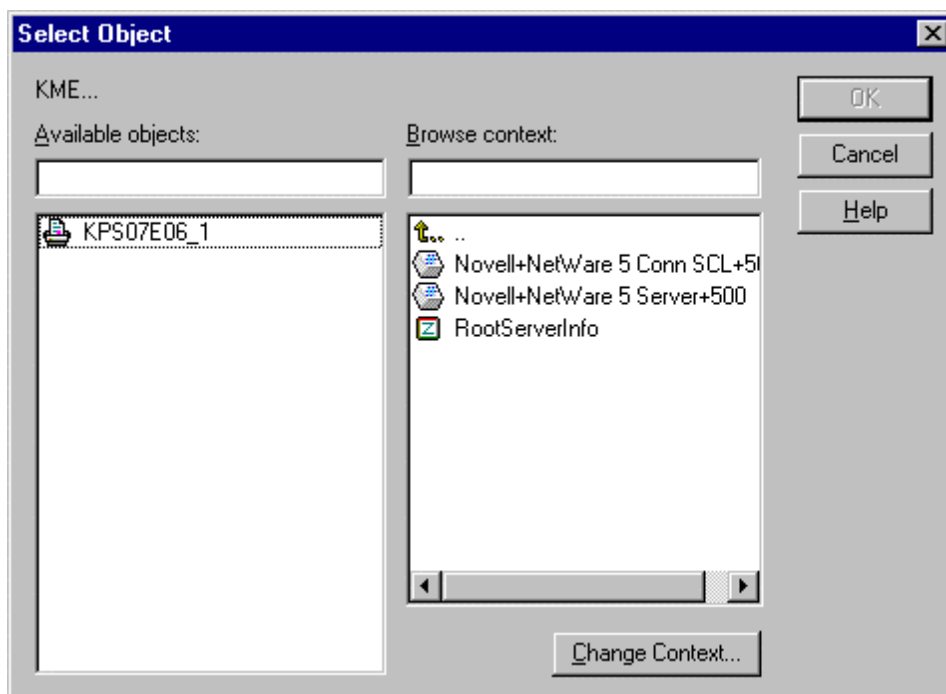
The Printer name of the Ethernet card is KPSXXXXXX ( XXXXXX is the lower 6 characters of the MAC address. ) You can see the MAC address at the face plate of the card.



25. Click **Assignments**.



26. Click **Add...** button.



27. Scroll the Directory Context items until you find the context where you can find the printer created in the procedure 21. (You do not have to scroll if you can find the printer on the current context.)

Highlight the printer in the **Available objects** list box and click **OK** button.

The **Print Server (non NDPS)** window appears again showing the selected printer.

28. Click **OK**.

NetWare administrator window appears again showing the created printer.

29. Turn off and on the printer.

Wait for 3 to 5 minutes.

### (1.1.1.2) Setting up the Client Computer.

Before setting up the client computer, please do the following preparation in advance.

(1) Setting up network configuration on Windows95 or Windows98.

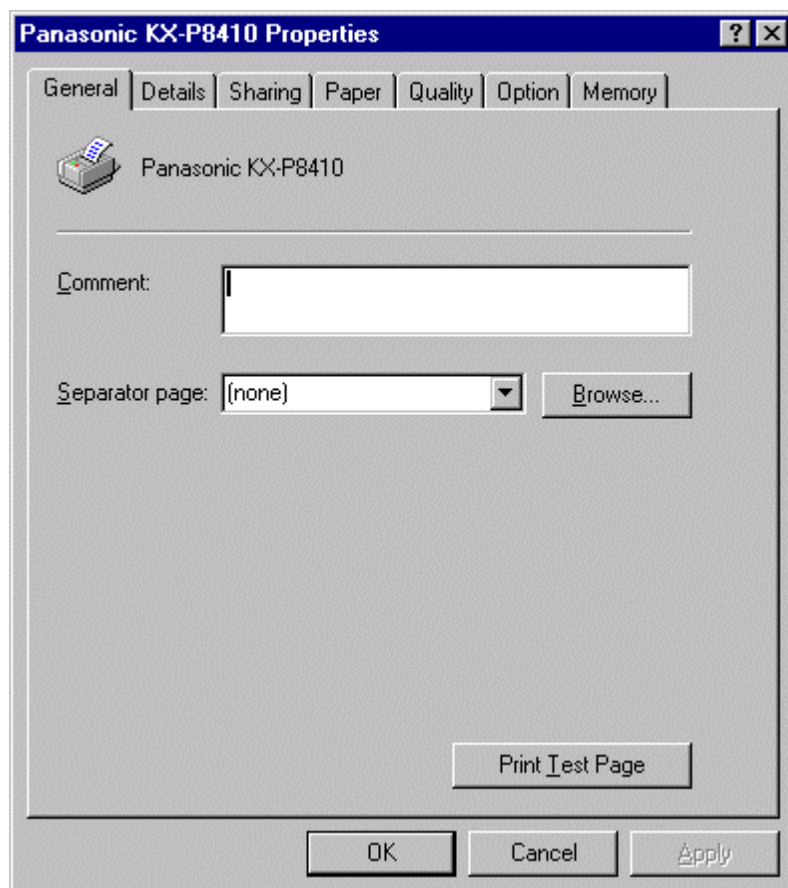
(2) Set up your Client PC so that you can login the server in NDS.

(3) Install the printer driver.

1. From the **Start** menu, choose **Settings**, and click **Printers**.

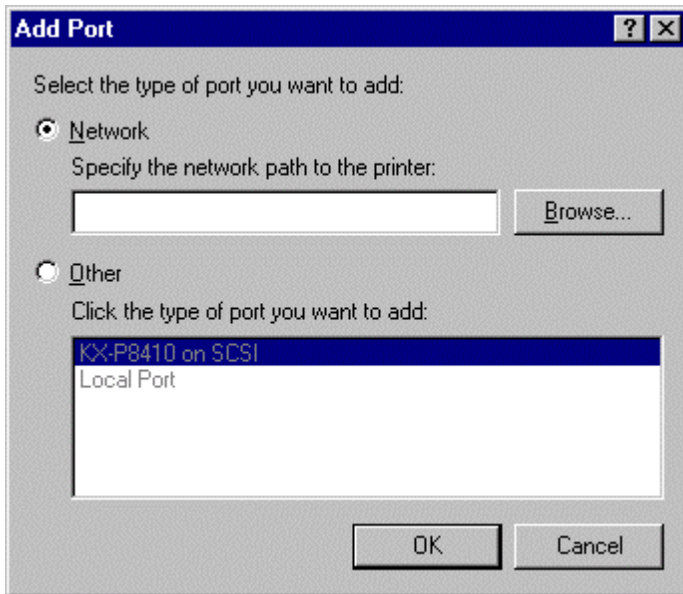
2. Select the **Panasonic KX-P8410** Printer icon.

3. Choose **Properties** from the **File** menu.



4. Click the **Details** tab in the **Properties** window.

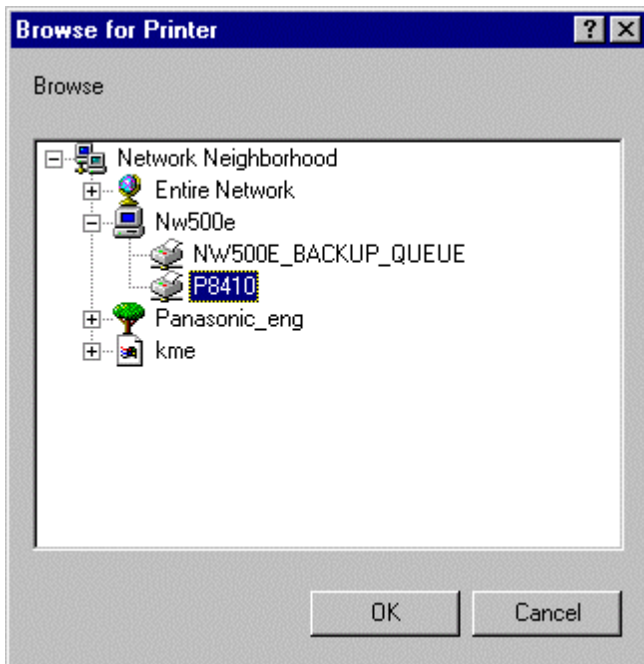
5. Click the **Add Port** button.



6. In the **Add Port** dialog box, click **Network**.

7. Click **Browse** to display your network environment.

8. Expand the levels to locate the printer (print queue name) you want to use and click it.



9. Click **OK** button.

The **Add Port** window appears again showing the printer you specified in **Specify the network path to the printer** box with the following format

`\\Server name\Printer name(Print Queue name)`

10. Click **OK** button.

The **Properties** window appears again.

11. Click **OK** button.

**NOTE:**

Specify **ASCII** as a data type if you want to use a banner.

(1.1.2) Use Netware ver5.0 with NPrinter mode, IPX/SPX protocol, NDS.

After installing the Ethernet card, please follow the below two major setup procedures.

(1.1.2.1) Setting up the printer settings in Netware ver5.0 file Server.

(1.1.2.2) Setting up the Client Computer.

(1.1.2.1) Setting up the printer settings in Netware ver5.0 file Server.

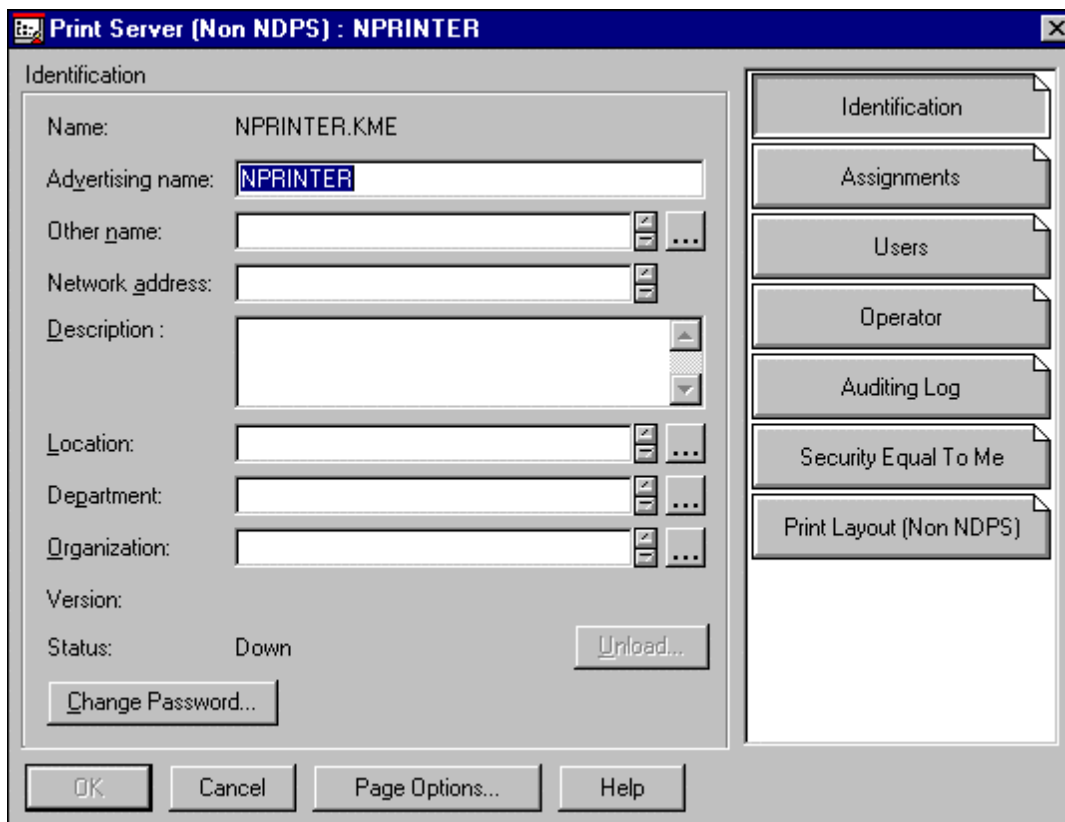
Set up your Client PC in advance so that you can login the server in NDS mode as the printer settings is done mostly on the Client PC. Please refer to NetWare online manual for more detail.

1. Follow the procedure 1-23 of (1.1.1.1) Setting up the printer settings in NetWare ver5.0 file Server.

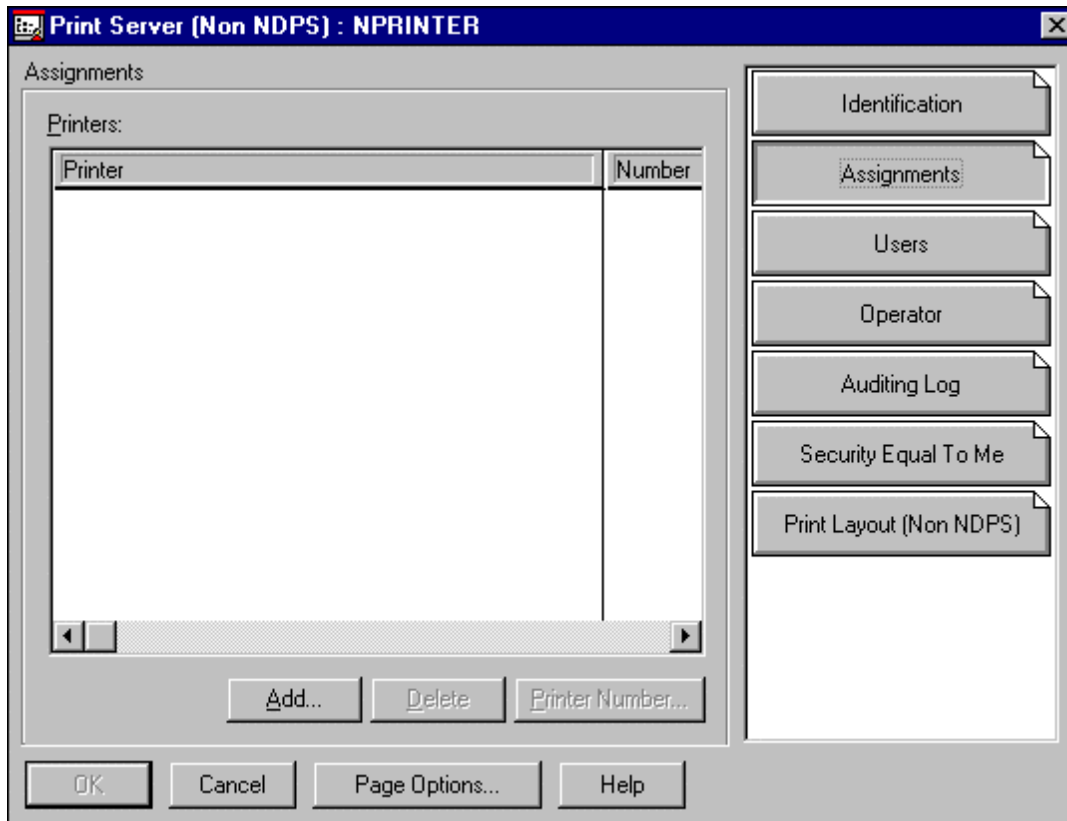
Specify a Print Server name in the **Print Server Name** box.

Ex.) NPRINTER

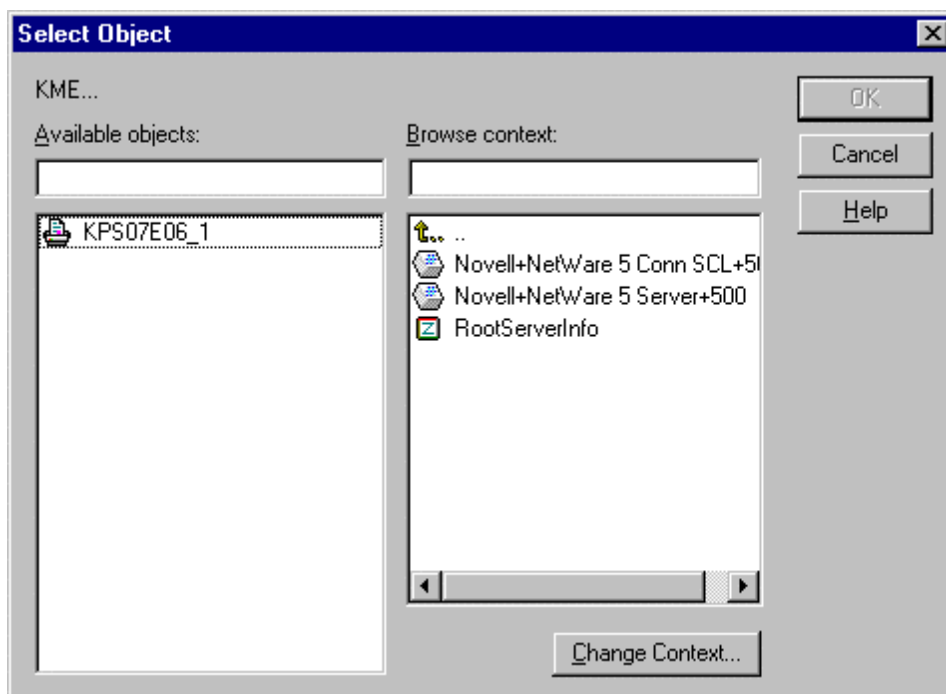
Click the check box labeled **“Define additional properties”** and click **Create** button



3. Click **Assignments** button.



4. Click **Add...** button.



5. Scroll the Directory Context items until you find the context created in procedure 21 of (1.1.1.1) Setting up the printer settings in Netware ver5.0 file Server.

(You do not have to scroll if you can find it on the current context.)

Highlight the printer in the **Objects** list box and click **OK** button.

The **Print Server (non NDPS)** window appears again showing the selected printer.

6. Click **OK** button.

Netware administrator window appears again showing the created print server.

(Please do the following procedure on the server after procedure 6.)

7. Enter **LOAD PSERVER XXXXXX** on the console screen and press **Enter** key.

XXXXXX is the printer server name specified in the procedure 2.

8. Enter **NWCONFIG** on the console screen and press **Enter** key.

9. Select **NCF files options** from **Configuration options** and press **Enter** key.

**Available NCF Files Options** menu appears on the screen.

10. Select **Edit AUTOEXEC.NCF** and press **Enter**.

**File:AUTOEXEC.NCF** screen appears.

11. Enter **LOAD PSERVER XXXXXXXX** at the bottom of the edit screen.

XXXXXX is the printer server name specified in the procedure 2.

12. Press ESC button.

The message box **Save file AUTOEXEC.NCF?** appears on the screen.

13. Select **Yes** and press **Enter**.

**Available NCF Files Options** menu appears.

14. Press ESC button twice.

The message box **Exit nwconfig?** Appears on the screen.

15. Select **Yes** and press **Enter**.

16. Turn off and on the printer.

Wait for the printer to finish initializing for 3 to 5 minutes.

### (1.1.2.2)Setting up the Client Computer.

Please follow the procedure described in (1.1.1.2)Setting up the Client Computer.

(1.1.3) Use Netware ver5.0 with NDPS with Pserver mode, IPX/SPX protocol, NDS.

After installing the Ethernet card, please follow the below two major setup procedures.

(1.1.3.1) Setting up the Pserver.

(1.1.3.2) Setting up the printer settings in the server Netware ver5.0.

(1.1.3.3) Setting up the Client Computer. (Windows95 or Windows98).

(1.1.3.1) Setting up the Pserver.

Please follow the procedure described in (1.1.1.1) Setting up the printer settings in Netware ver5.0 file Server.

(1.1.3.2) Setting up the printer settings in the server Netware ver5.0.

Set up your Client PC in advance so that you can login the server in NDS mode as the printer settings is done mostly on the Client PC. Please refer to Netware online manual for more detail.

1. Start the Netware server.

2. Start your client PC (Windows95 or Windows98). Login to the server in NDS mode as the Supervisor(Admin).

3. Install NDPS product on the server side if it is not installed.

Click **Novell** on the graphical console screen (X Server – Graphical Console) and select **Install**.

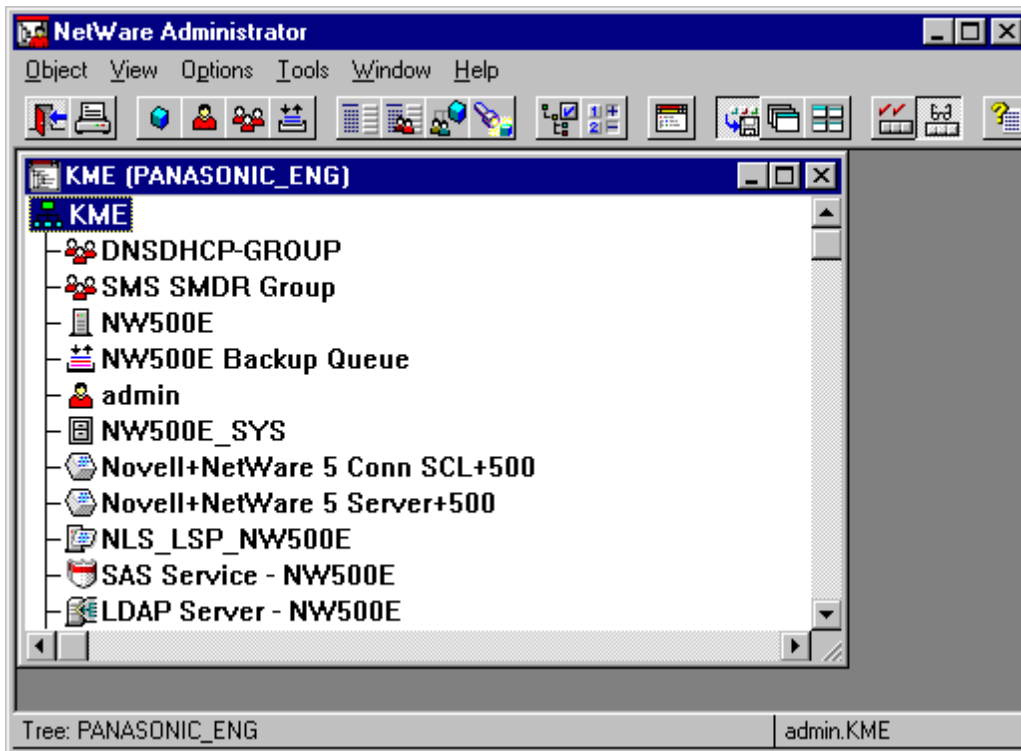
Confirm NDPS product is included in the **Install Products** screen.

If not, click **New Products** and follow the instruction on the screen.

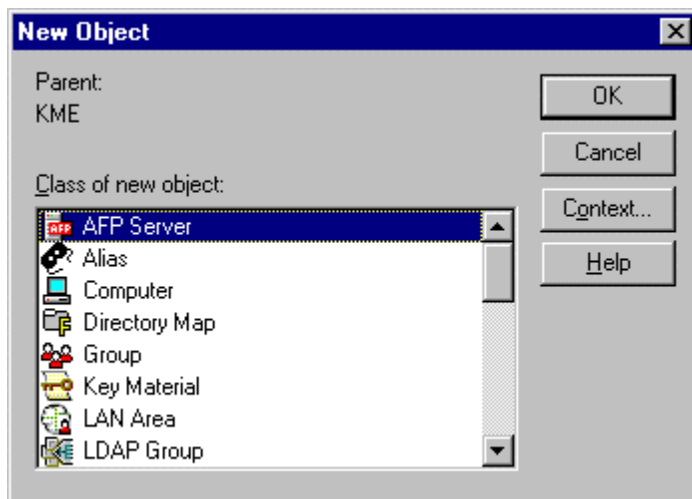
4. Confirm NDPS Broker is launched.

If NDPS product is installed, it is automatically launched. Confirm it at the server side by pressing Ctrl + Esc key.

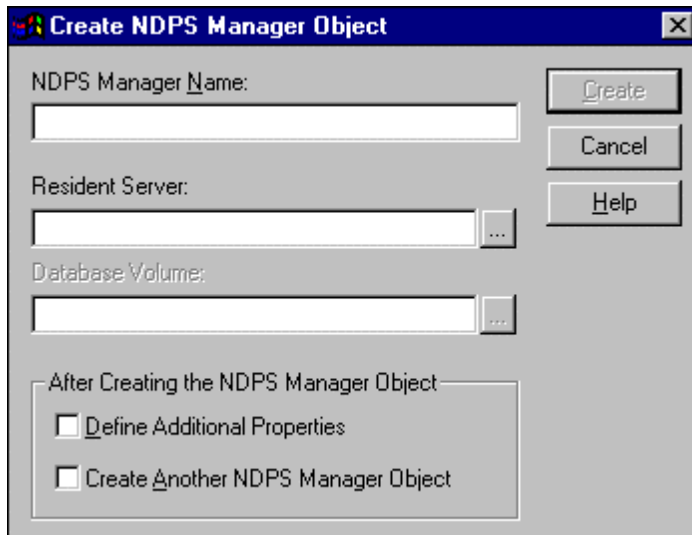
5. Launch NetWare Administrator. You can do so by clicking on **NWADMIN** icon in the NetWare Tools group in Windows.



6. If NDPS Manager has already been launched, proceed to 17.  
If not, move to the context where you want to create **NDPS Manager** object.  
Choose **Object** from **Main** menu and select **Create**.



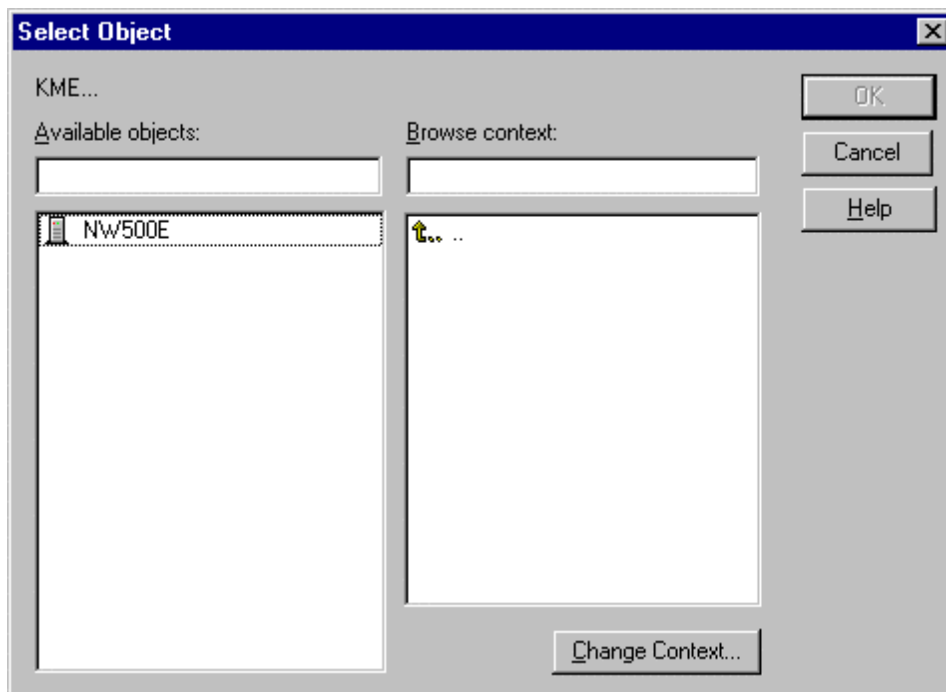
7. Select **NDPS Manager** from **Class of new Object** list and click **OK**.



8. Specify a NDPS manager name in the **NDPS Manager Name** box.

Ex) NDPS\_MANAGER

9. Click the button to the right of the **Resident Server** box.

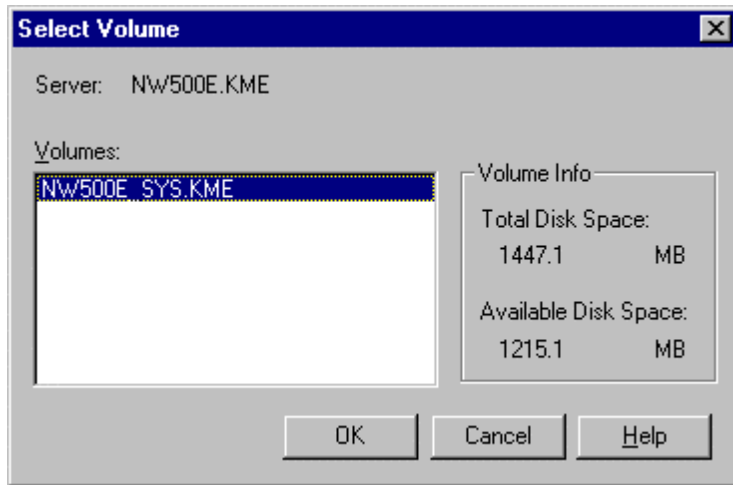


10. Scroll the Directory Context items until you find the server to which you want NDPS manager to belong. (You do not have to scroll if you want NDSP manager to locate in the current context.)

Highlight the server in the **Available object** list box and click **OK** button.

The specified server name is shown in “Create NDPS Manager Object” screen.

1. Click the button to the right of the “Database volume” box.



12. Highlight the volume to which you want the NDPS Manager to belong to in the **Volume** list and click **OK**.

The specified volume name is shown in "Create NDPS Manager Object" screen.

13. Click **Create** button.

NetWare Administrator window shows the created NDPS manager.

(Please do the following procedure on the server after the procedure 13.)

14. Enter **NDPSM** on the console screen and press **Enter** key.

15. Select the created NDPS Manager from "Contents of current context" box and press **Enter** key.

16. Enter **NWCONFIG** on the console screen and press **Enter** key.

**NetWare configuration** menu appears.

17. Select **NCF files options** from **Configuration option** and press **Enter** key.

"Available NCF Files options" menu appears on the screen.

18. Select **Edit AUTOEXEC.NCF** and press **Enter** key.

**File :AUTOEXEC.NCF** screen appears.

19. Enter NDPSM XXXXXXXXX at the bottom of the edit screen.

XXXXXXXXXX is the NDPS Manager name specified in the procedure 8.

20. Press **ESC** button.

The message box "Save file AUTOEXEC.NCF?" appears on the screen.

21. Select **Yes** and press **Enter** key.

22. Press **ESC** key twice.

The message box "Exit nwconfig?" appears on the screen.

23. Select **Yes** and press **Enter** key.

(Please return to the client screen and do the following procedure.)

24. Highlight the Context where you want to create NDPS Printer object and select the Object from Main menu and Choose **Create**.

25. Select **NDPS Printer** when **New Object** windows appears and click **OK**.

26. Specify a NDPS Printer name in the **NDPS Printer Name** box.

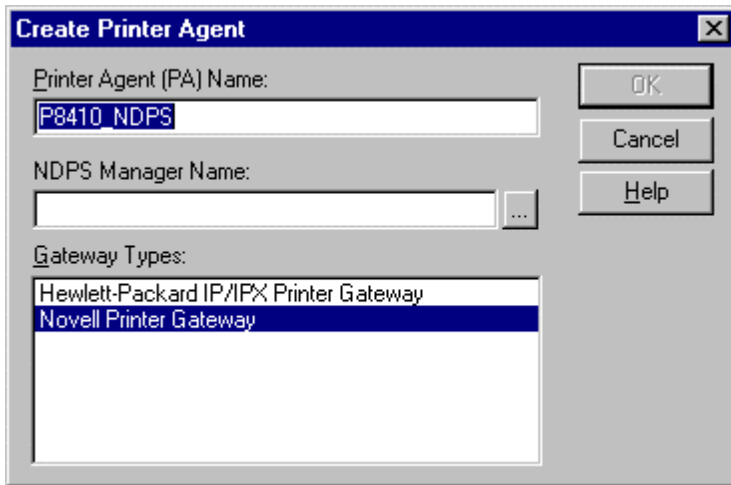
It is recommended to specify the name with Printer model name.

Ex) P8410\_NDPS

**NOTE:**

You cannot use the same name as you specified for the queue name you created before.

27. Click the check box labeled "**Define additional properties**" and click **Create** button.

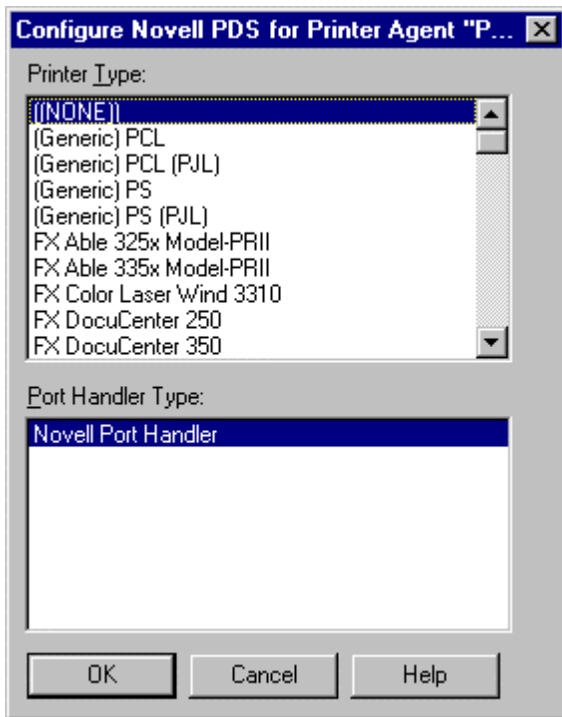


28. Click the button to the right of **NDPS Manager Name** box.

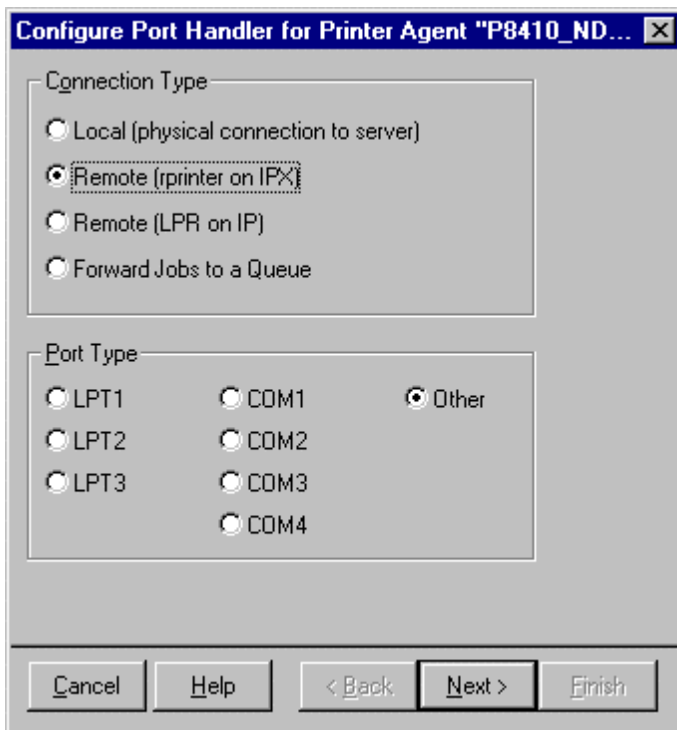
29. Scroll the Directory Context until you find the NDPS Manager. (You do not have to scroll if you can find it on the current context.)

Highlight the NDPS Manager in the **Available Object** list box and click **OK** button.

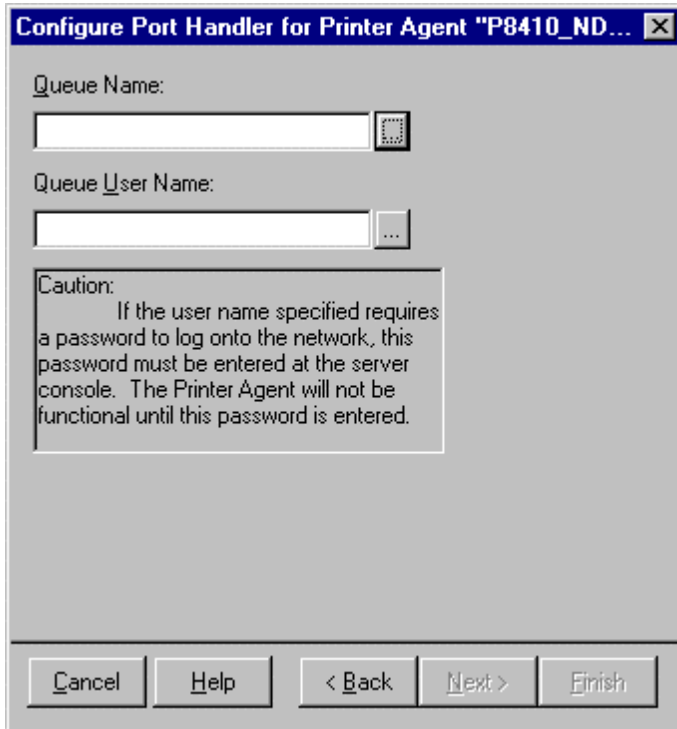
30. Click **OK** button.



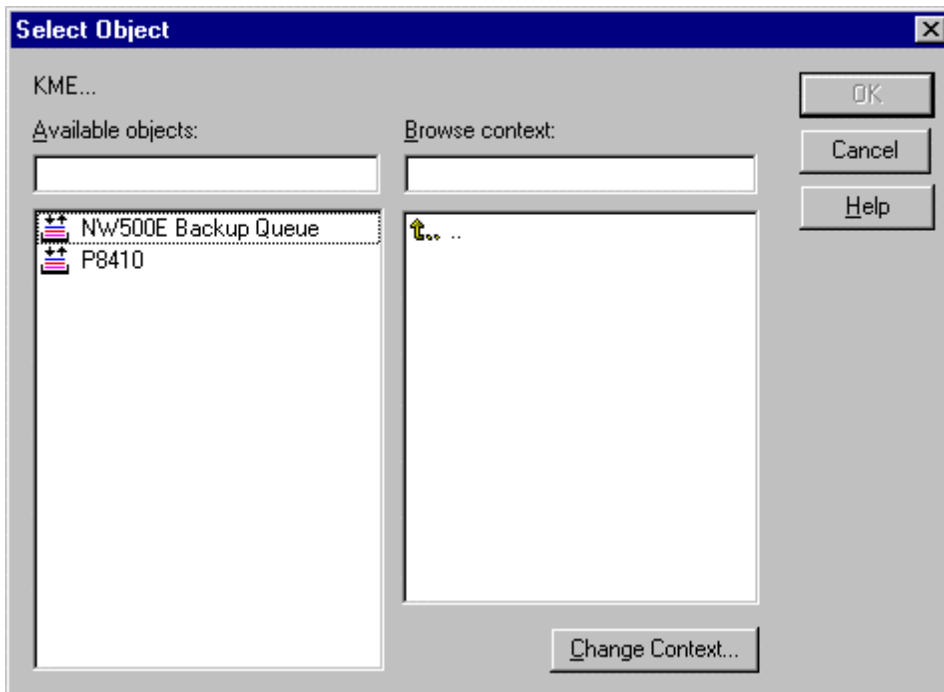
31. Click **OK** button.



32. Select "Forward Jobs to a Queue" as a **Connection Type** and click **Next**.

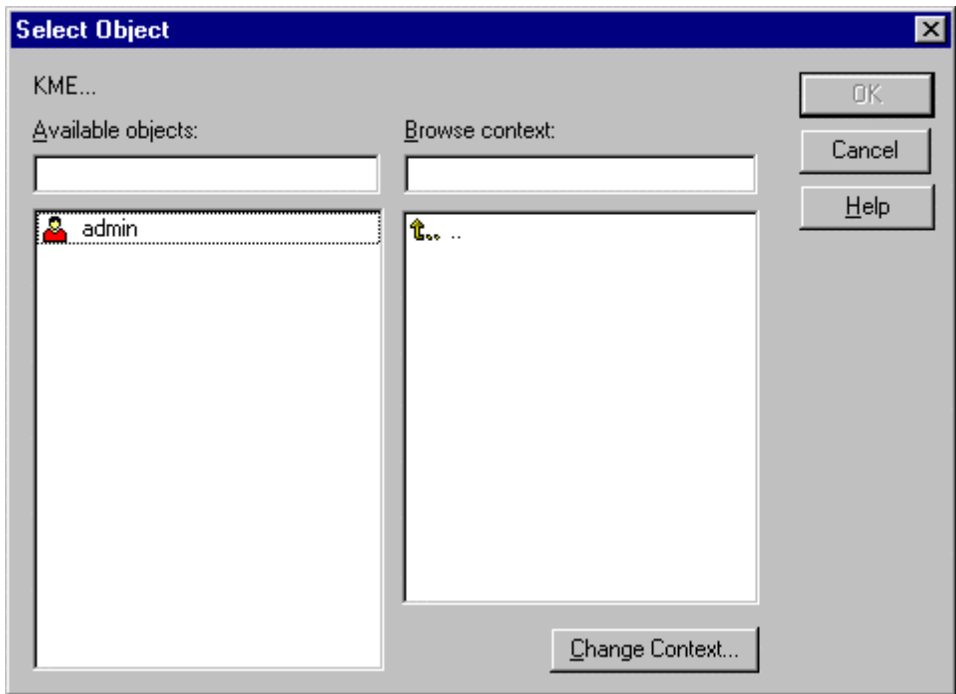


33. Click the button to the right of **Queue name** box.



34. Scroll the Directory Context items until you find the Queue that you created when you set up Pserver(1.1.1). (You do not have to scroll if you can find it on the current context.) Highlight the queue in the **Available Object** list box and click **OK** button.

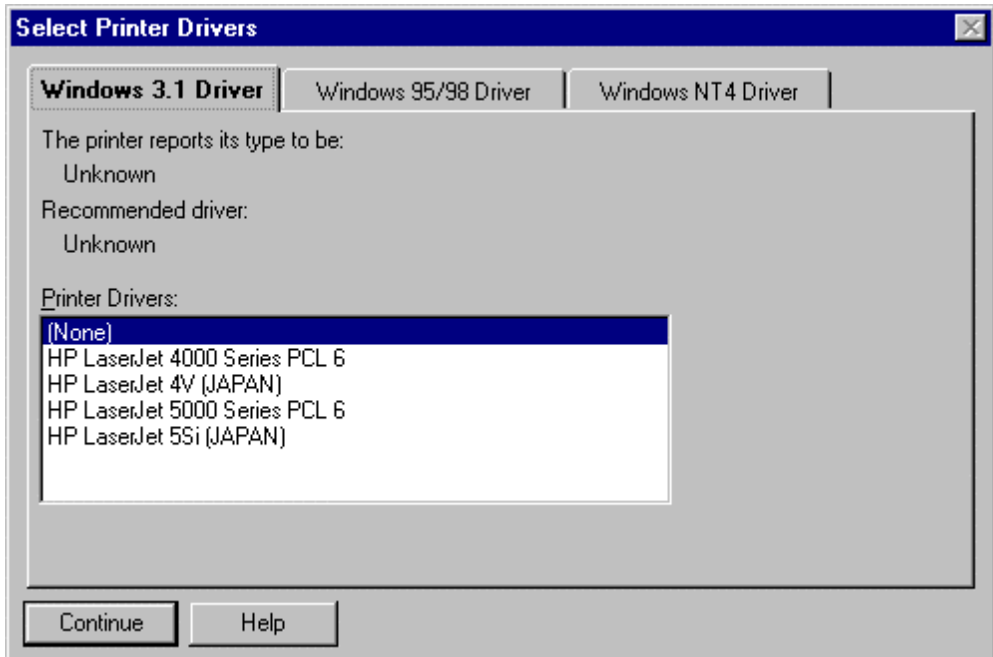
35. Click the button next to the **Queue User Name** box.



36 Scroll the Directory Context items until you find the context where you can find the user(s) to use the queue. (You do not have to scroll if you can find the user(s) on the current context.)

Select the user or the group who use the queue and click **OK** button.

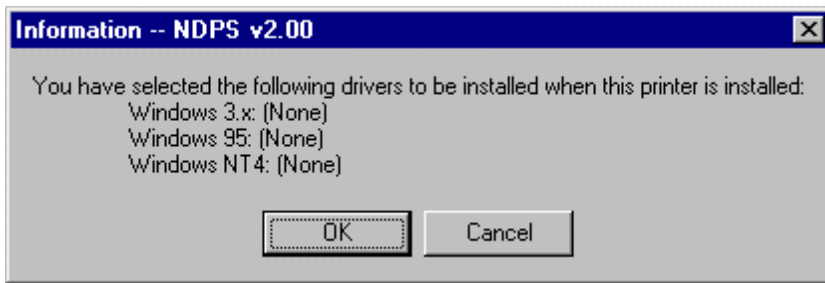
37. Click **Finish** button.



**NOTE:**

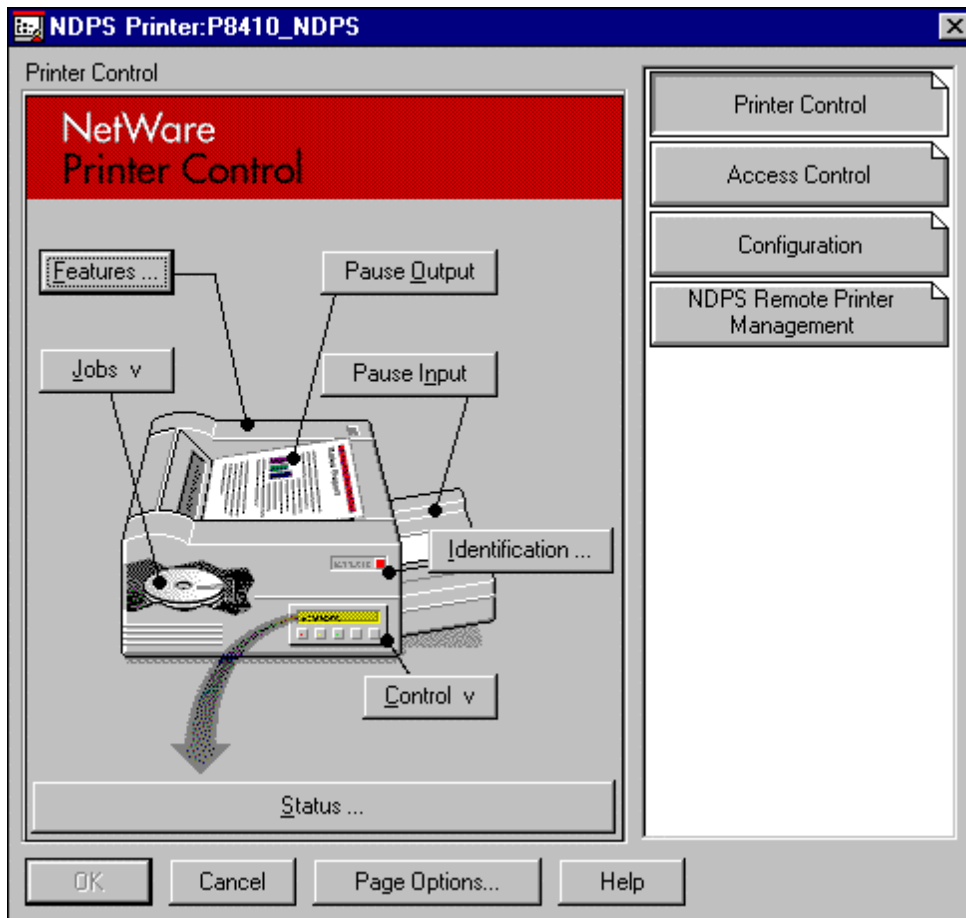
If password is specified for the user who manage, please go to the server console screen and enter the password before “**Loading Printer Agent (PA)**” message appears on the screen.

38. Click **Continue** button.



39 Click **OK** button.

After "NDPS Printer Object Creation" message appears, the following window appears on the screen.



40. Click **Cancel** button.

(1.1.3.3)Setting up the Client Computer. (Windows95 or Windows98).

Please follow the procedure described in (1.1.1.2) Setting up the Client computer.

(1.1.4)Use Netware ver5.0 with NDPS with NPrinter mode, IPX/SPX protocol, NDS.

After installing the Ethernet card, please follow the below two major setup procedures.

(1.1.4.1) Setting up the NPrinter.

(1.1.4.2) Setting up the printer settings in the server Netware ver5.0.

(1.1.4.3) Setting up the Client Computer. (Windows95 or Windows98).

(1.1.4.1) Setting up the NPrinter.

Please follow the procedure described in (1.1.2.1) Setting up the printer settings in Netware ver5.0 file Server.

(1.1.4.2) Setting up the printer settings in the server Netware ver5.0.

Please refer to (1.1.3.2) Setting up the printer settings in the server Netware ver5.0. The only difference in the procedure is.

29. Scroll the Directory Context until you find the queue when you set up Nprinter. (You do not have to scroll if you can find it on the current context.)

Highlight the Queue in the **Available Object** list box and click **OK** button.

(1.1.4.3) Setting up the Client Computer. (Windows95 or Windows98).

Please follow the procedure described in (1.1.1.2) Setting up the Client computer.

(1.2.1) Use Netware ver5.0 with NDPS with lpr, TCP/IP protocol, NDS.

After installing the Ethernet card, please follow the below two major setup procedures.

(1.2.1.1) Setting up the printer settings in Netware ver5.0 file Server.

(1.2.1.2) Setting up the Client Computer.

(1.2.1.1) Setting up the printer settings in Netware ver5.0 file Server.

Set up your Client PC in advance so that you can login the server in NDS mode as the printer settings is done mostly on the Client PC. Please refer to Netware online manual for more detail.

1. Follow the procedure 1-31 of ((1.1.3.2) Setting up the printer settings in the server Netware ver5.0.

2. Select "Remote (LPR on IP) " as a **Connection Type** and click **Next** button.

Configure Port Handler for Printer Agent "P8410\_ND..."

Host Address

.  .  .

Host Name

Printer Name

Cancel Help < Back Next > Finish

3.If you specify the printer with the IP address:

Click **Host Address** check button and enter the IP address.

If you specify the printer with the host name.

Click **Host Name** check button and enter the host name.

4.**Printer Name** box shows PASSTHROUGH as a default name. Please delete it and Enter **PASSTHRU** with all upper caps.

Configure Port Handler for Printer Agent "P8410\_ND..."

Host Address

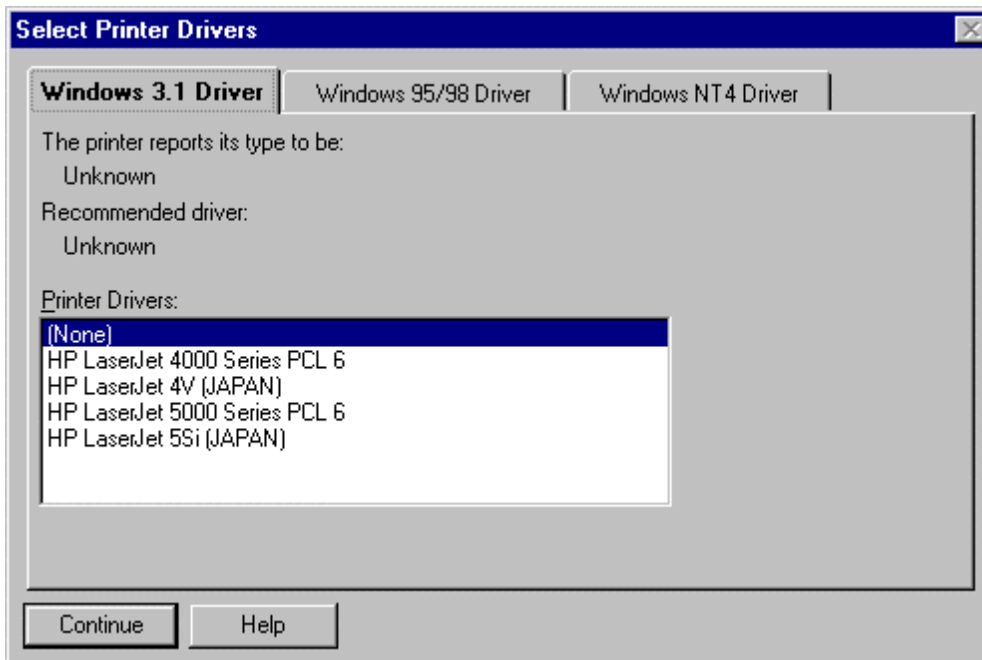
.  .  .

Host Name

Printer Name

Cancel Help < Back Next > Finish

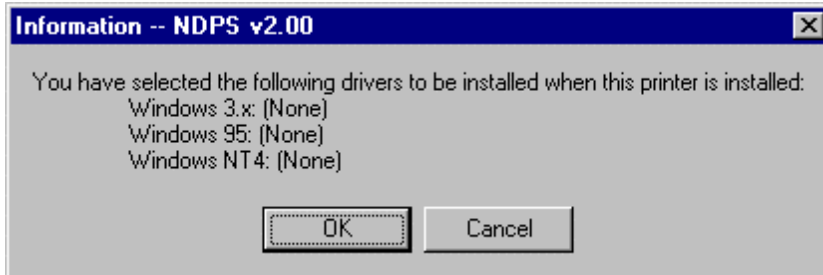
5.Click **Finish** button.



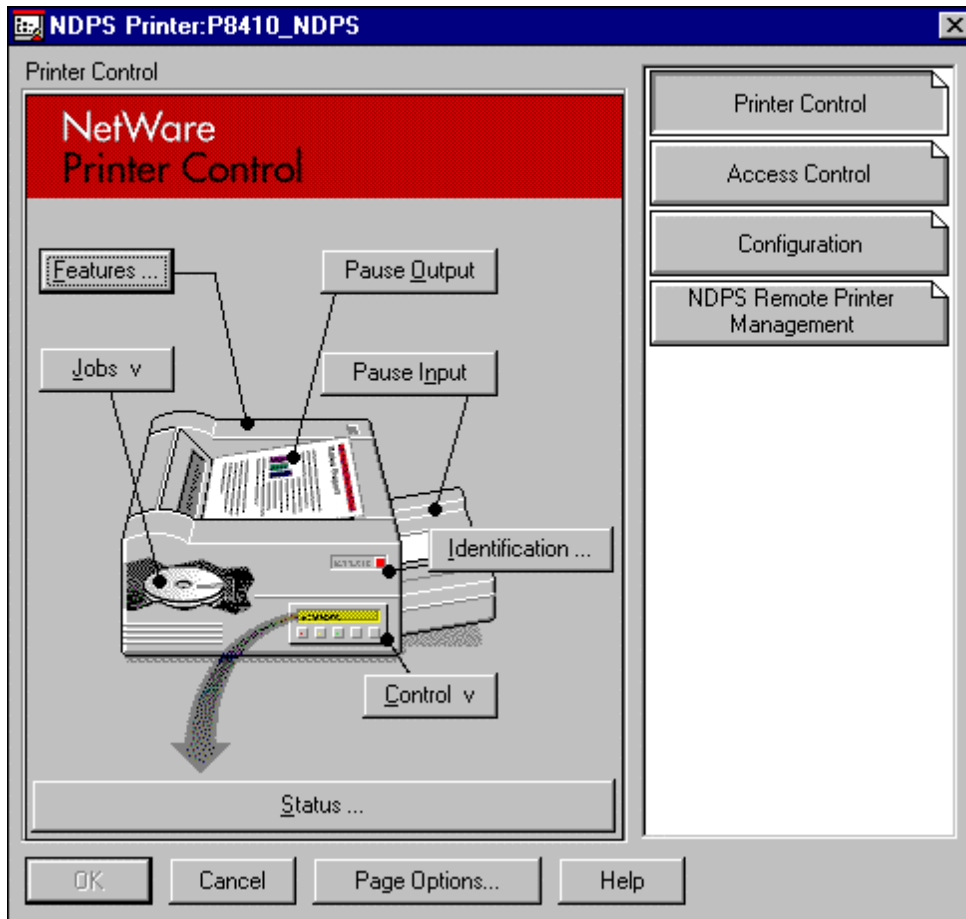
**NOTE:**

If password is specified for the user who manage, please go to the server console screen and enter the password before “**Loading Printer Agent (PA)** “ message appears on the screen.

6.Click **Continue** button.



7.Click **OK** button.



8. Click **Cancel** button.

Netware Administrator appears showing the created NDPS Printer.

(1.2.1.2) Setting up the Client Computer. (Windows95 or Windows98).

Please follow the procedure described in (1.1.1.2) Setting up the Client computer.