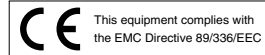


8CH Digital Disk Recorder  
**WJ-HD220**  
8 camera inputs



Optional Accessories  
FTP Viewer Software  
**WV-AS20**  
Daisy Chain Connection  
**WV-CA48/10K** (Cable Kit)  
**WV-CA48/50** (Cable)  
**WV-CA48/JN** (Junction Unit)



**PS•Data**

**KEY FEATURES**

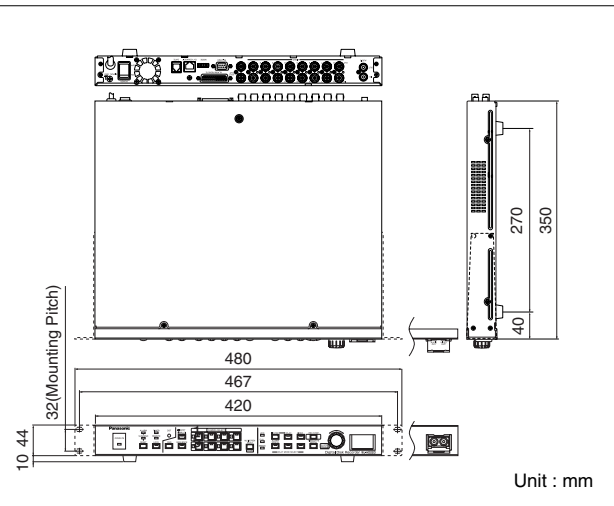
- Built-in 160GB HDD in one unit.
- Built-in 8ch multiplex frame switching system.
- Coaxial cabling supports direct control of 1-4ch Panasonic PTZ cameras with optional WV-CU650/WV-CU360CJ.
- Selectable SIF mode recording for 2x disk saving.
- 10Base-T/100Base-TX network interface capability for remote monitoring.
- Supported Protocol: TCP/IP, HTTP, FTP, SMTP, SNMP, DNS and DDNS.
- Optional FTP Viewer Software; WV-AS20 is available.
- Four way JPEG compression recording modes selectable.
- Built-in 8ch Video Motion Detector function.
- Independent monitor outputs for Spot and 4/8 multi-screen.
- Max. 5 seconds pre-alarm recording function.
- Alarm list search using date, time and camera channel to list up to 9,999 alarm logs.
- Time & Date can be embedded in the JPEG image.
- Remote control by PC with RS232C devices, and RS485 chain by PS-Data link with optional System Controllers ; WV-CU650/WV-CU360CJ.
- 1ch Audio input / output.
- 1ch Video / Audio output for recording images to on optional Time Lapse VTR.
- The OSD Setup, installation menus and HTML can be displayed in seven languages: English, German, French, Italian, Spanish, Russian\*, and Chinese\*.

\*Russian and Chinese in HTML only

**SPECIFICATIONS**

<b>General</b>	
Power Source Required	220 V - 240 V AC, 50 Hz
Power Consumption	45 W
Ambient Operating Temperature	+5 °C - +45 °C
Ambient Operating Humidity	Less than 85 %
Dimensions	420 mm (W) x 44 mm (H) x 350 mm (D)
Weight	5.2 kg
<b>Input</b>	
Video Input	1.0 V(p-p)/75 Ω Composite video signal with 75 Ω Automatic Termination / Looping through (x8)
Audio Input	-10 dB 10 kΩ unbalanced, RCA standard jack
<b>Image Process</b>	
Compression System	JPEG
Pixel Rate	Normal; 720H x 286V (Effective pixels 656H x 272V) SIF; 352H x 286V
Refresh Rate	25 ips maximum
<b>Output</b>	
Video Output	1.0 V(p-p)/75 Ω Composite video signal/Looping through (x8)
Video Output Front Panel	1.0 V(p-p)/75 Ω Composite video signal (x1)
Audio Output	-10 dB 600 Ω unbalanced, RCA standard jack (x1)
Audio Output Front Panel	-10 dB 600 Ω unbalanced, RCA standard jack (x1)
Spot Monitor Output	1.0 V(p-p)/75 Ω Composite video signal (x1)
Multiscreen Monitor Output	1.0 V(p-p)/75 Ω Composite video signal (x1)
<b>Control Port</b>	
Alarm/Remote Port	25-pin Full Pitch D-sub connector (x1) Alarm Input 1-8, Alarm Reset Input, EXT REC Input, Time Adjust Input, Sequence Input: Low-active, Non-voltage N.O. Contact, ≥100 ms Alarm Recovery Output 1, Disk End Status Output, Time Adjust Output, Warning Output, REC Status Output, Sequence Output: Low-active, Open-collector, 24 V DC 100 mA max. Alarm Output 1, Play Status Output: Low-active, Open-collector, 12 V DC 100 mA max. Alarm Output 2: High-active, 12 V 4.7 kΩ Alarm Recovery Output 2: High-active, 12 V DC 220 Ω
RS-485 (PS • Data)	6-conductor modular jack (RJ-11)
RS-232C	9-pin D-sub connector
10/100BASE-TX Port	10Base-T and 100Base-TX, 8-conductor modular jack (RJ-45) Protocol Installed: TCP/IP, HTTP, FTP, SMTP, SNMP, DNS, DDNS Security: Password-protected
<b>Hard Disk Drive</b>	
Built-in	160GB x 1

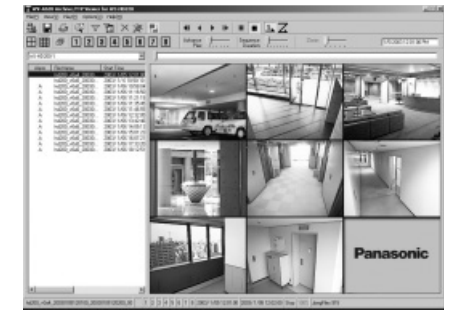
**DIMENSIONS**



**FTP Viewer Software WV-AS20 (optional)**

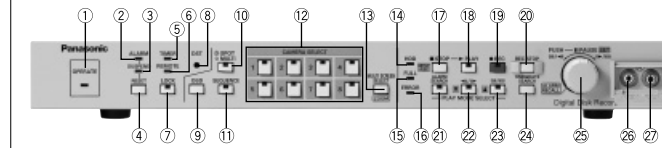
Installation of the optional WV-AS20 software allows you to download image data stored in the WJ-HD220 Series.

- Up to 10 WJ-HD220 Digital Disk Recorders can be registered.
- Images can be automatically downloaded at pre-set times.
- The zoom feature enlarges images up to 5x.

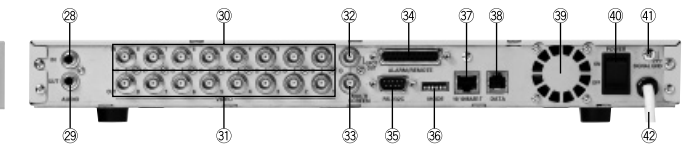


**MAJOR OPERATING CONTROLS**

**Front View**

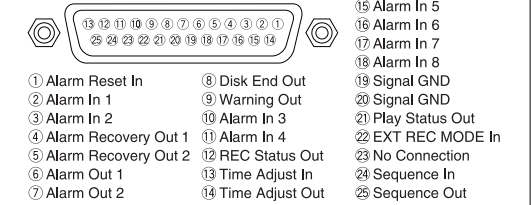


**Rear View**



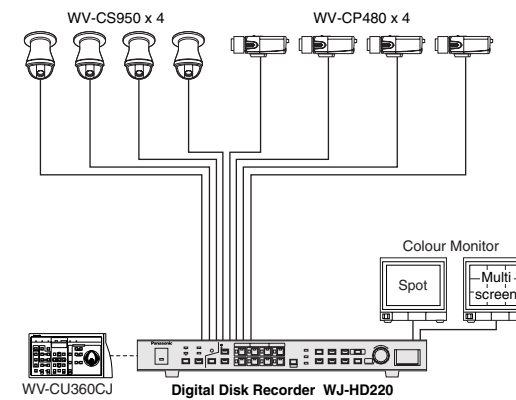
- |                              |                                 |                                |                          |
|------------------------------|---------------------------------|--------------------------------|--------------------------|
| ① Operate Indicator          | ⑬ Multiscreen Selection Button  | ⑳ JogDial                      | ⑳ 10Base-T/100Base-TX    |
| ② Alarm Indicator            | ⑭ HDD Access Indicator          | ㉑ Audio Out                    | ㉑ Data Port              |
| ③ Alarm Suspension Indicator | ⑮ FULL Indicator                | ㉒ Video Out                    | ㉒ Cooling Fan            |
| ④ Alarm Reset Button         | ⑯ Error Indicator               | ㉓ Audio Input Connector        | ㉓ Power Switch           |
| ⑤ Timer Indicator            | ⑰ Stop and Setup/Escapes Button | ㉔ Audio Output Connector       | ㉔ Signal Ground Terminal |
| ⑥ Remote Indicator           | ⑱ Playback Button               | ㉕ Video Input Connector        | ㉕ Power Cord             |
| ⑦ Lock Button                | ⑲ Recording Button              | ㉖ Video Output Connector       |                          |
| ⑧ Daylight Saving Time       | ⑳ Recording Stop Button         | ㉗ Spot Output Connector        |                          |
| ⑨ On Screen Display Button   | ㉑ Alarm Search Button           | ㉘ Multiscreen Output Connector |                          |
| ⑩ Monitor Selection Button   | ㉒ Step Playback & Down Button   | ㉙ Alarm/Remote Port            |                          |
| ⑪ Sequence Button            | ㉓ Skip Playback & Up Button     | ㉚ RS-232C Port                 |                          |
| ⑫ Camera Selection Buttons   | ㉔ Time and Date Search Button   | ㉛ Mode Setup DIP Switch        |                          |

**Alarm/Remote Connection**



**SYSTEM EXAMPLES**

**1 Basic System**



**2 Network System**

